



GLOABAL HYDRAULICS PTE. LTD.

115 Neythal Road, Singapore 628602

Email: globalhydraulics@globalhydraulics.com.sg

Website: www.globalhydraulics.com.sg

Co.Reg./GST No: 200808607C



About Us

GLOBAL HYDRAULICS PTE. LTD.

In 2008, highly experienced technocrats, founded Global Hydraulics Pte Ltd (GHPL). Since then, the company has grown into a reputable company that offers a comprehensive range of products and services for all Hydraulic, Pneumatic, Electrical, and Mechanical needs for Marine, Offshore Deck, Industrial, Civil Construction, Healthcare & Food Industries.

GHPL's solutions include Inspection, Troubleshooting, Upgrade, Refurbishment, Maintenance service, Overhaul repair service, Modifications, Installation, Commissioning, Testing and Operations of Offshore Cranes, Marine Cranes and Mechanical handling equipment.



GHPL is strategically located in Singapore and has earned its strong reputation by completing almost all its projects on time and within budget.

With an integrated team of 50 over extensively trained professionals, GHPL work diligently round the clock to ensure all customer's requirements are met. These experts, and the quality of work that they produce, are the reason GHPL has gained recognition as an effective, strong, and reliable company for its customers.

Facilities:

GHPL executes all its services at 115 Neythal Road, Singapore. This office and workshop boasts over 54,000 square feet of land, which includes 30,000 square feet of covered workshop space, 20,000 square feet of open yard area, and its own test rig facilities.

The workshop's high ceilings conveniently allow GHPL's cranes to operate indoors/outdoors. These cranes have a safe working load (SWL) ranging from 1.5 Tons, 5 Tons : 3 units, 10 Tons : 3 units, 15 Tons, 22 Tons (Hook Height 4.8m), 32 Tons (Hook Height 9m).

Global Hydraulic Test Rig – Electrical motor capacity 180 kW, Hydraulic pump flow rate 450 liters per minute, Rated pressure 450 bar, Electrical Power Source Available is 1200 Amps, Load Testing Test Bed – 3 units upto 250 Tons, Transport Lorries – 4 units.

All these facilities allow GHPL to cater to all its clients' demands and needs.

GLOBAL HYDRAULICS PTE. LTD.



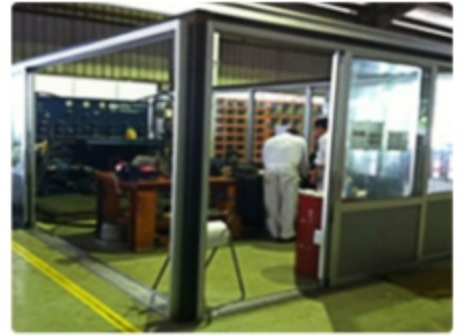
WORKSHOP

GLOBAL HYDRAULICS PTE. LTD.



WORKSHOP

CLEAN ROOM TEST



WORKSHOP



WORKSHOP



WORK SHOP TEST BED



OPEN AREA TEST BED



TEST BED



Stockist / Dealer:



Stanley Hydraulic Underwater Tools - USA



T2 Alloy (Tungum Tubing) - UK



REPAIR & SERVICE WORKS FOR HEILA
CRANES - ITALY / NETHERLANDS



Vestdavit Boat Handling Systems -
Bergen, Norway



REPAIR & SERVICE FOR RIG JACKING
SYSTEM – HYDRAQUIP CUSTOM SYSTEMS
INC, USA



AUTHORIZED SERVICE PROVIDER FOR
IBERCISA WINCHES, SPAIN



SERVICE PROVIDER FOR OFFSHORE
HYDRAULIC IMPACT HAMMER
EQUIPMENT, UK



VEHICLES PTO - BEZARES, SPAIN



Kinematics Manufacturing Incorporated
For Winches - USA

We have stocks for the following items

- Stainless Steel Seamless Tubes ; Both in Inches and MM for 316 / 316L / 317
- Hydraulics fittings & Accessories and Hoses.
- Rexroth Hydraulic Pumps / Motors / Control Valves
- Eaton / Vickers Hydraulic Pumps / Motors / Control Valves
- Danfoss Hydraulic Pumps / Motors / Control Valves
- Hagglund Motors
- Screw Pumps / Gear Pumps / Gear Motors
- Zollern Gear Boxes
- Power Units / Winches / Cranes
- Hydraulics Jacks



Hydraulic Equipment Repair / Services

Electro Hydraulic Winches / Air Winches



Electro Hydraulic Winches / Air Winches



Electro Hydraulic Winches / Air Winches



Electro Hydraulic Winches / Air Winches



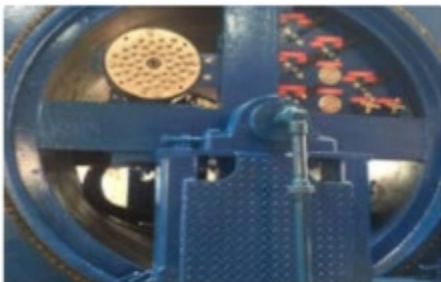
Man Riding Winches



Hose Reels / Brake Bands / Caliper Brakes



Hose Reels / Brake Bands / Caliper Brakes



Cranes





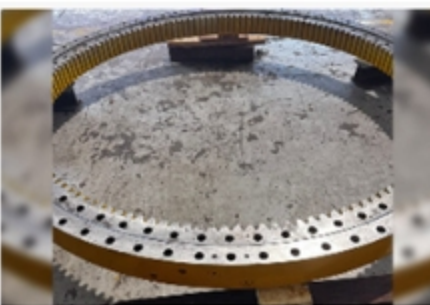
Cranes



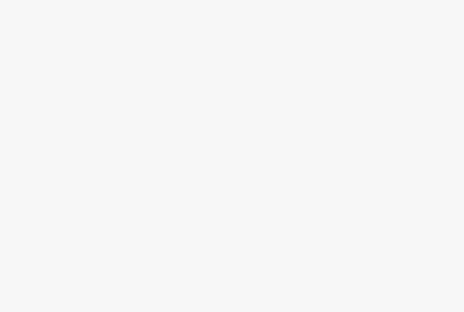
Cranes



Slew Ring Bearing



Access Basket / Scissor Lift / Loading Bay / Jacks



Crane Hook Block



Crane Hook Block



ROV A-Frame



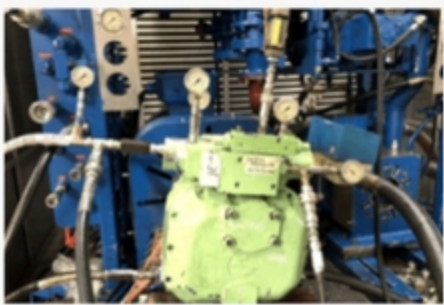
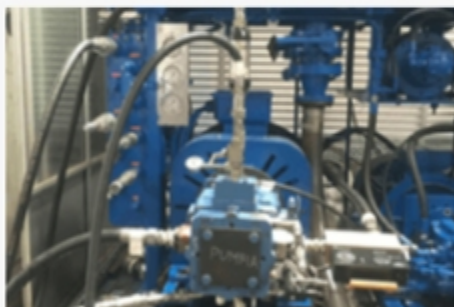
HPU



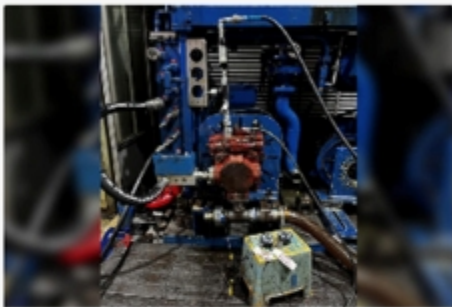


HPU

Pumps



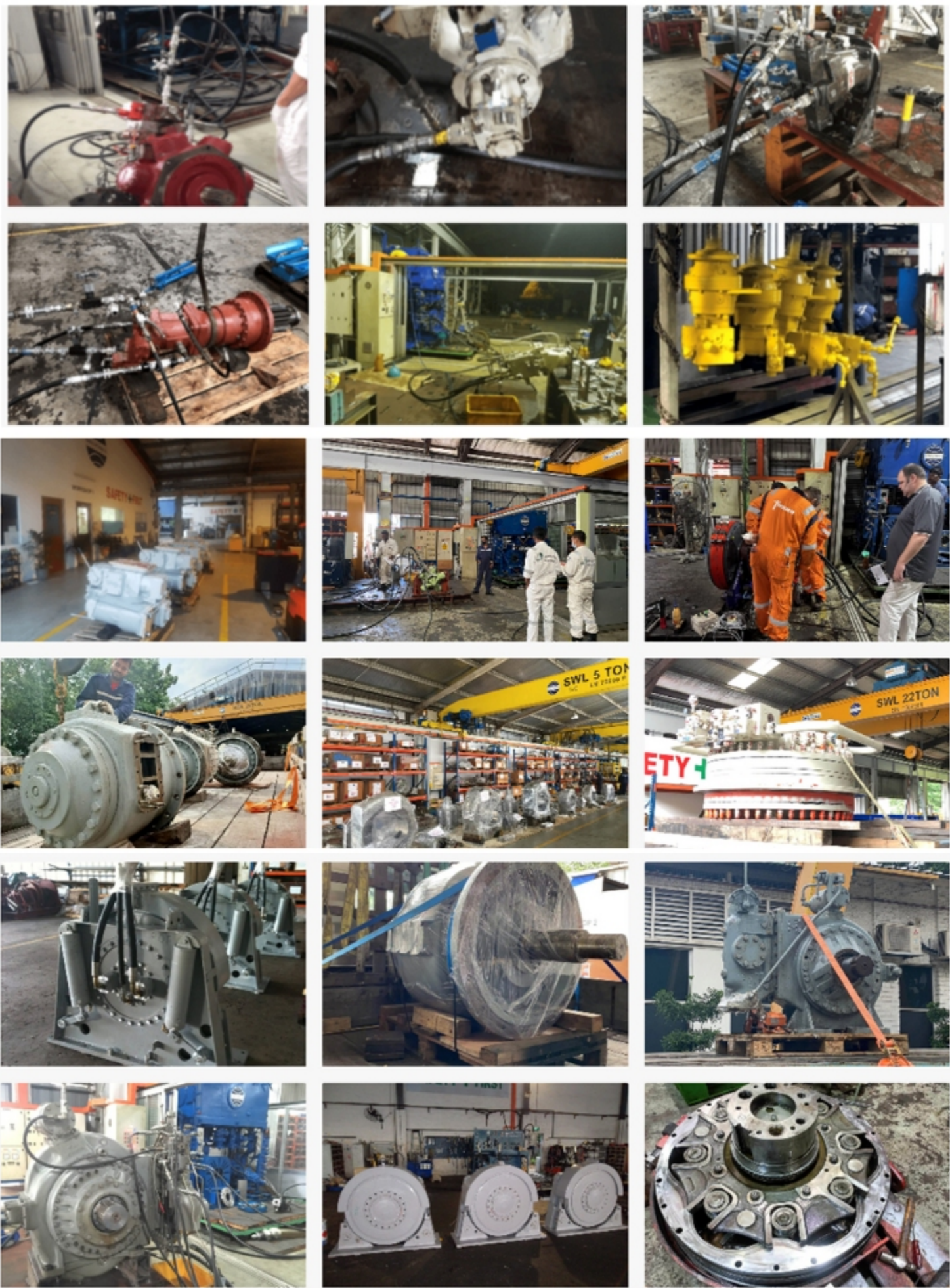
Pumps



Motors



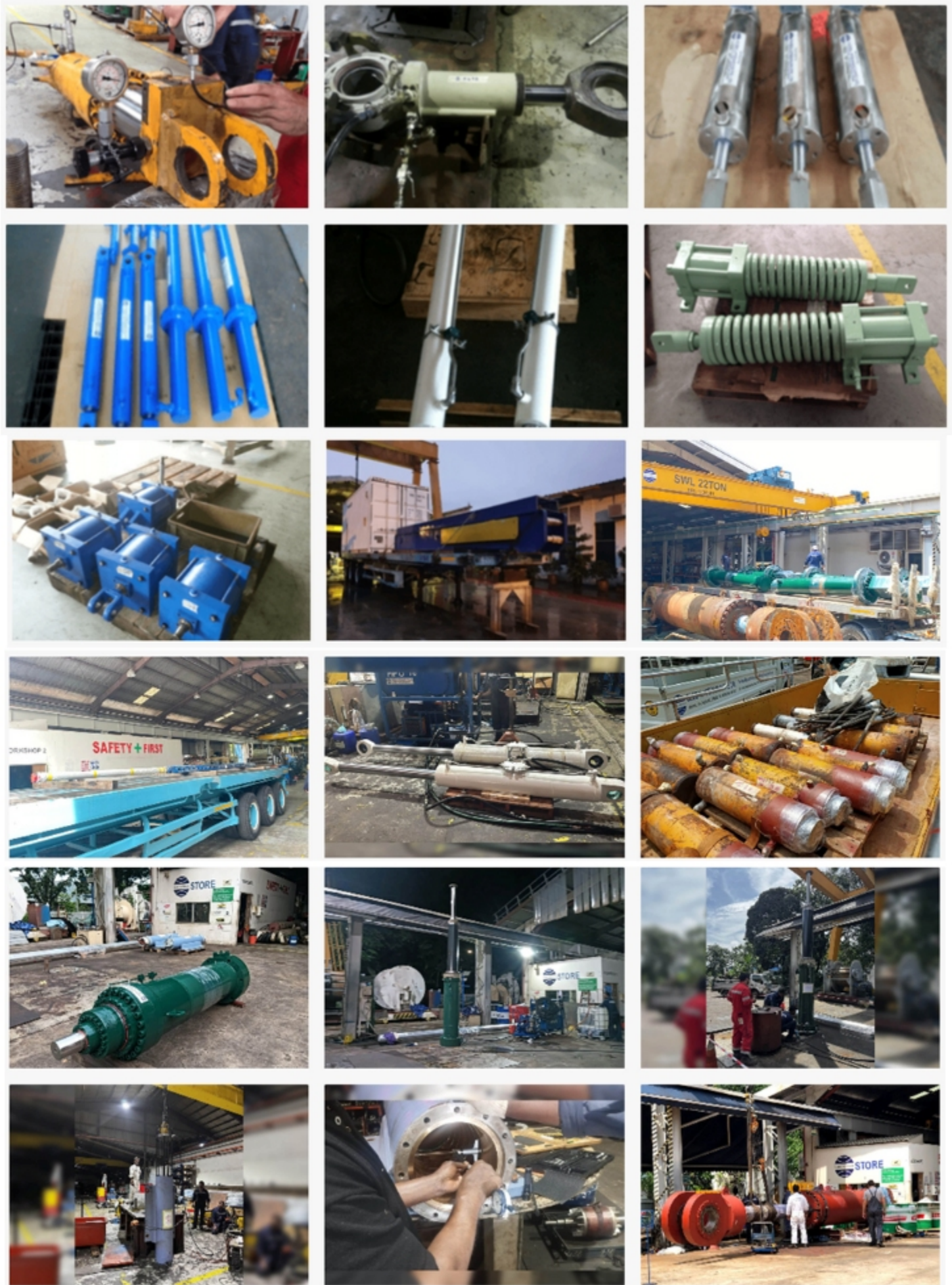
Motors



Cylinders



Cylinders



Cylinders



Cargo Control Valve



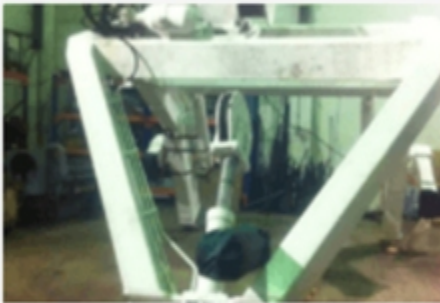
Cargo Control Valve



Cargo Control Valve



Electro Hydraulic Life Boat Davit



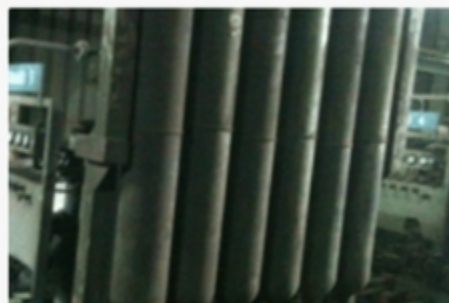
Jack Up Rig and Gear Box



Jack Up Rig and Gear Box



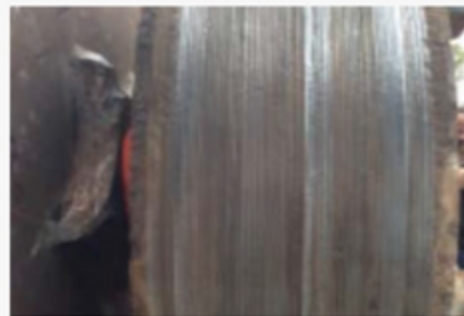
Accumulators



Towing Pin, Shark Jaw, Capston, Hydraulic Grab, Fairleads



Towing Pin, Shark Jaw, Capston, Hydraulic Grab, Fairleads



Towing Pin, Shark Jaw, Capston, Hydraulic Grab, Fairleads



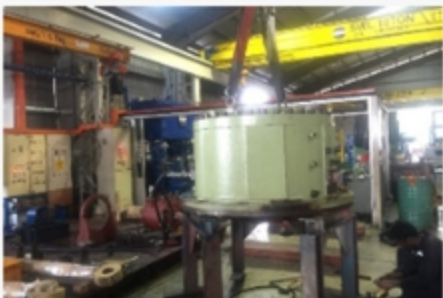
Cable Tensioners / Spooler



Steering Gear / Bow Truster



Steering Gear / Bow Truster



PVR Valve



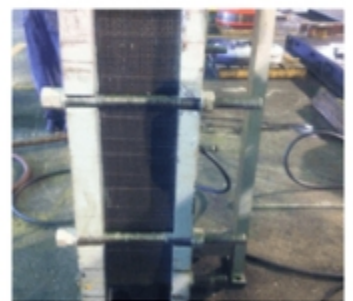
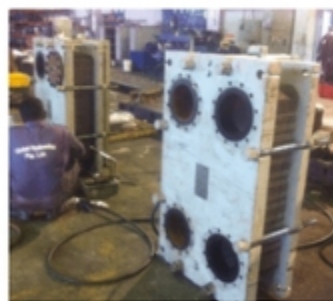
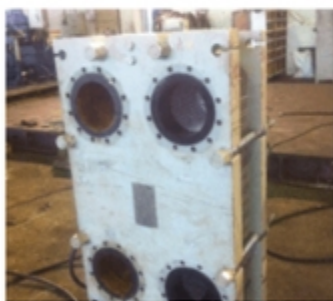
Pipelines



Pipelines



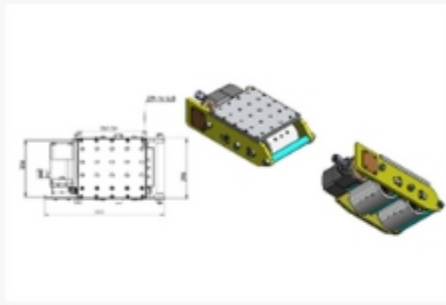
Coolers



Custom Design



Custom Design



Industrial Hydraulic Equipment & Press



Construction Hydraulic Equipments (Hydraulic Bollards)



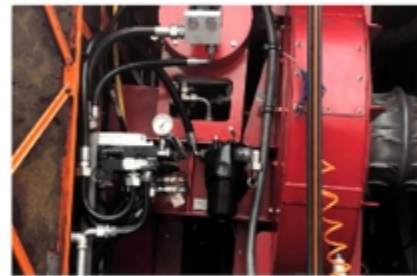
Construction Hydraulic Equipments (Safe Dig Air Excavator)



Construction Hydraulic Equipments (Pilers)



Construction Hydraulic Equipments (Cutters)



Construction Hydraulic Equipments (Roadblockers)



Construction Hydraulic Equipments (Water Channel Gates)



Hospital Bed



Services:

GHPL offers a professional and yet competitive Asset Management Support Services to all types of Cranes, Winches, Deck Equipment, Hydraulic system and Drilling Equipment installed on the Drilling Rigs, FPSOs, FSOs, Offshore support vessels, Crane barges, Subsea vessels, Dredging vessels, Bulk Carriers, Container vessels, Oil tankers, VLCC and Bunkering Vessels.

Hydraulic Services & Products:

GHPL has a strong hydraulic engineering background and has over three decades experience in providing hydraulic specialist services to our Singapore based clients and International clients in Offshore, Marine and Oil & Gas market sectors. Our hydraulic service team is multi-skilled and capable analyzing & troubleshooting complex hydraulic control systems and servicing large hydraulic systems & components.

We provide a diverse range of hydraulic engineering services to many offshore and marine equipment. This include trouble-shooting of control system, repair service of hydraulic pumps, motors and control valves, HPU overhaul service, hydraulic flushing service, hydraulic piping installation and Hose management.

Our hydraulic service team is supported by well-equipped work shop facility that include Clean -room environment, Pump & Motor Test Bench, Test Rigs for Control Valves, Flushing HPUs, Hose Crippling Machine, High pressure testing and PRV Testing and Re-calibration unit.

Our Maintenance Overhaul Repair (MRO) & Refurbishment services include:

- Trouble-shooting of hydraulic and electrical control system problems at site
- Carry-out on board Repair and Service of Hydraulic Equipment at Shipyards, Anchorage, Voyage and Offshore
- Hydraulic Pumps & Motors Overhaul and Bench Testing (Axial Piston / Radial Piston / Vane / Gear types / Low Pressure System / High Pressure System
- Hydraulic Control Valve Overhaul and Testing (Direction control / Pressure control / Flow control / Load control / Servo Valve types)
- Hydraulic power unit and accessories overhaul service and repairs
- Hydraulic Cylinders overhaul service repair and testing
- Accumulator service, refurbishment and recertification
- Hydraulic Hot Oil Flushing service, Chemical Cleaning, Fluid Cleanliness and Fluid Management
- Oil Flushing
- Drilling and Choke & Kill Hose high pressure testing and Bore-scope Inspections.

The equipment and systems that we are servicing include:

- Diesel Engine driven HPUs & Electrical motor driven HPUs
- Local control panels and Remote-control panels
- Pedestal cranes, Pipe handling cranes, Access baskets, Grabs and Cherry Pickers
- Mooring Winches and Umbilical Reels
- Steering Gear systems
- Rig Skidding systems, Rig Jacking systems and Rig Tensioning Systems
- BOP Cranes and BOP hydraulic control system
- Subsea hydraulic panels and reels
- ROV handling system, A-Frames & Launch and recovery systems (LARS)
- Ballast and Cargo control systems
- Iron Roughnecks, Rack Chock systems,
- Drill floor HPU's, Chock & Kill manifold, High pressure test units
- Emergency shutdown (ESD) systems & Workover control systems

- Saturation dive handling equipment
- Accumulator stations and Wellhead control panels
- Turbine Starter hydraulic packs
- Thruster hydraulic systems
- Riser Pull-In Systems
- FPSO Turret hydraulic systems.

Winches and Deck Equipment:

GHPL offers complete range of professional Maintenance Overhaul Repair (MRO) program to all types of Winches, Windlass, Sheaves, Fairleaders, Bunkering Flow booms, Reels, Chain Stoppers, Towing Pin, Lock Jaw, Shark Jaw, Rollers and Life Boat davits.

This include various capacities and sizes of deck equipment (ranges from 5T to 500T) installed on the Drilling Rigs, FPSOs, FSOs, Offshore support vessels, Crane barges, Subsea vessels, Dredging vessels, Bulk Carriers, Container vessels, Oil tankers, VLCC and Bunkering Vessels.

Winch type covers Anchor windlass, Anchor handling winch, Anchor handling towing winch, 4-Point Mooring winches, 8-Point Mooring winches, Towing winch, Double Drum Multi-purpose winch, Recovery winch, Riser Pull-in Winch and Air winches.

Our Services include:

1. Winch Inspection and Condition Evaluations
2. Maintenance Overhaul Repair (MRO) & Refurbishment services
 - Trouble-shooting of hydraulic and electrical control system problems at site
 - Carry-out on board Repair and Service of Hydraulic Equipment at Shipyards, Anchorage, Voyage and Offshore
 - Hydraulic Pumps & Motors Overhaul and Bench Testing (Axial Piston / Radial Piston / Vane / Gear types / Low Pressure System / High Pressure System)
 - Hydraulic Control Valve Overhaul and Testing (Direction control / Pressure control / Flow control / Load control / Servo Valve types)
 - Hydraulic power unit and accessories overhaul service and repairs
 - Hydraulic Cylinders overhaul service repair and testing
 - Accumulator service, refurbishment and recertification
 - Hydraulic Hot Oil Flushing service, Chemical Cleaning, Fluid Cleanliness and Fluid Management
 - Oil Flushing
 - Drilling and Choke & Kill Hose high pressure testing and Bore-scope Inspections
3. Trouble-shooting of hydraulic and electrical control system performance issues
4. Carry-out on board and Voyage Repairs and Services
5. Winch Pull Testing and Re-certifications
6. Supply of Winch spares
7. Engineering Modifications and Upgrade
 - Winch drum modifications and upgrades
 - Hydraulic control system upgrade
 - Addition of Load and Length Monitoring system

Cranes and Lifting:

GHPL has a strong engineering background and specialist service team consists of Crane engineers, Hydraulic engineers, Electrical engineers, Inspectors, Technicians and Riggers. Our technical team is supported with well-equipped spacious onshore workshops, testing rigs, including dedicated rigging and lifting equipment facilities. Our Project team has technological proficiency and training to ensure the projects are delivered on time with in agreed budget limit.

Our Services include the Inspection, Troubleshooting, Upgrade, Refurbishment, Maintenance service, Overhaul repair service, Modifications, Installation, Commissioning, Testing and Operations of Offshore Cranes, Marine Cranes and Mechanical handling equipment.

1. Inspection and Crane Condition Evaluations (CCE)

- Annual Inspection as per API recommendation by API Certified Inspector
- Annual Inspection as per ABS, DNV, Lloyds and other similar class standards
- Failure mode, effects and criticality analysis (FMECA) based study and inspection
- 5 Yearly SPS Survey includes NDT & Drive Spline Inspections, Load Testing
- 10 Yearly Major maintenance overhaul repair services

2. Provision of Crane Maintenance Contract support

3. Crane boom, A-frame and Structural integrity management

4. Crane boom, A-frame and Structural integrity management

5. Wire rope Inspection, Hook blocks Inspection and Re-certifications

6. Safe Load Indicator inspection & re-calibrations

7. Provision of API and BS 7121 Certified Crane Operators and Maintainer

8. Man Riding compliance audit and survey

9. Trouble-shooting of hydraulic and electrical control system problems on board

10. On-site machining works for Slewing bearing mounting surface

11. Supply of Crane Spares (Gear box, Slewing bearing, Sheaves, Hydraulic pumps and motors, Valves, Boom sections, Safe Load Indicator, etc)

12. Refurbishment, Upgrade & Engineering Modification

- Complete work based refurbished of pedestal lattice boom cranes, box boom cranes and knuckle boom cranes
- Slew-ring bearing changeouts, inspections and deferral study
- Boom structural refurbishment and welding repairs
- Hydraulic system refurbishment and overhaul
- Diesel Engine, Power train and distributor gear box overhaul
- Crane pedestal replacements and Boom restwelding repair
- Wire rope supply and Rigging service
- Fabrication, Supply and installation of Crane operator cabins with built control
- Re-Engineering and upgrading of control systems
- Man Riding feature upgrade.

1. Installation support, commissioning and Load Testing of Cranes at Shipyards and offshore

2. Life Extension study and Preparation of maintenance strategies based on FMECA Failure root cause analysis

3. Lifting Gear Inspection with LEEA certified Inspectors

4. Container based Rigging Loft Supply and Inspections.

Boat Handling Systems:

“Global Hydraulics is an Authorized Service Partner in Singapore for Vestdavit Boat Handling Systems.”

Our Service Technicians are trained and certified by Vestdavit and hence, highly qualified to repair, service and maintain all Vestdavit Boat Handling systems for Clients. Please click on

<https://www.vestdavit.no/partner/global-hydraulics-pte-ltd/>



Since 1975 Bergen-based Vestdavit has supplied over 1,800 davits and side and stern launch systems. We have proven ourselves over more than 30 years use in the North Sea and other harsh environments around the world.

Boat handling systems from Vestdavit are designed and tailor-made for launch and recovery of boats in difficult conditions at sea. Hydraulic shock absorbers, and other high quality technology, ensures safe, efficient and reliable davits. Our range of davit systems are the first choice of navies, coastguards, seismic survey operators, pilot authorities and offshore operators who need to operate small boats safely from larger vessels.

Drilling Equipment:

GHPL's experienced engineers and technicians are capable of maintain, repair, overhaul and service the following Drilling Equipment:

- Top Drive, Swivel and Rotary table
- Draw-works and Mud pumps
- Iron Roughneck, Travelling Block and Crown Block
- BOP Crane, BOP Hoist and BOP handling equipment
- Pedestal Cranes and Mechanical handling systems
- Mooring winches and Anchor Winches
- Rig Skidding and Rig Jacking system
- Pipe handling and Riser Handling system
- Mission Pumps and Agitators
- Drill String & Action Motion Compensators
- Ezy Torque and Wire Line Unit
- Finger Board and Racking Board
- Man-riding air winches and Hot line wheel
- Koomey Hydraulic unit

Hose Integrity Management:

GHPL's experienced hose technician team has good experience, expertise and competence, in successfully delivering hose inspection and integrity management program. HIM programs are aimed to maximize useful life of hoses and reduce the down time of equipment.

Based on the site Inspections our hose technicians will generate Hose register with comprehensive technical details and provide recommendations for better maintenance and improved service life.

Our Hose technicians are trained to fabricate Hoses at site with Hose crimping machine, pressure test it, certify the Hoses and perform the replacement.

Flexible hose assemblies include Hydraulic hoses, Air hoses, Utility Hoses, Chemical Hoses, BOP Hoses, Chock & Kill Hoses and Rotary/Kelly Hoses.

Design, Manufacture and Fabrication:

GHPL's engineers are well versed with design, medication and retro fitting for the following equipment and supported by well equipped workshop facility.

- Electro hydraulic and Diesel hydraulic power packs
- Winches, Streamer Reels and Fuel Reels
- Hydraulic cylinders (Single acting, double acting and Telescopic)
- Hydraulic manifolds and Control Panels
- Electrical switch gears, starter panels and Ex-proof panels
- Structural design and Steel fabrication
- Special Machining works.

Rental Equipments

Rental Power Units (HPU):

NO	PRES SURE	FLO W IN LPM	ELEC TRIC AL MOT OR CAP	FREQ UNC Y	VOLTA GE / AMPS	TANK CAP ACIT Y	PUMP MODEL	CONTR OL VALVE	COO LER TYPE	OVER ALL SIZE L X B X H (In mm)
HPU 1	90 BAR	6	1.1 KW	50 HZ	220- 240V/4.7 A - 380- 420V/2.72 A	28 L	GEAR PUMP (NO LS & PRESSURE COMP)	MANUAL / SECTION AL VALVE / SINGLE SECTION	NA	560 X 250 X 650
		7	1.27 KW	60 HZ	440-480 V / 2.77 A					
HPU 2	40 BAR	12	1.1 KW	50 HZ	220- 240V/4.7 A - 380- 420V/2.72 A	28 L	GEAR PUMP (NO LS & PRESSURE COMP)	MANUAL / SECTION AL VALVE / SINGLE SECTION	NA	560 X 250 X 650
		14	1.27 KW	60 HZ	440-480 V / 2.77 A					
HPU 2A	210 BAR	17	7.5KW	50 HZ	380- 420V/15A - 14.2A	58 L	GEAR PUMP (NO LS & PRESSURE COMP)	MANUAL / SECTION AL VALVE / SINGLE SECTION	NA	1000 X 660 X 1000
		20	7.5KW	60 HZ	380-480 V / 14.5 A - 13.7A					
HPU 3	200 BAR	35	11 KW / 15 HP	50 HZ	415 V / 21.2 A	58 L	W94A114 R3B01N (NO LS & PRESSURE COMP)	MANUAL / SECTION AL VALVE / SINGLE SECTION	NA	1000 X 700 X 1350

HPU 5	250 BAR	33	15 KW / 20 HP	50 HZ	415 V / 26.7 A	230L	A10VSO4 5DFR1/52 R (WITH LS & PRESSURE COMP)	MANUAL / PVG32 / SINGLE SECTION	NA	1000 X 700 X 1700
	210 BAR	40		50 HZ	415 V / 26.7 A					
		48		60 HZ	440 V / 24.5 A					
HPU 5A	210 BAR	29	15 KW / 20 HP	50 HZ	400 V / 29 A	240 L	GEAR PUMP (NO LS & PRESSURE COMP)	NO CONTROL VALVE	NA	1200 X 800 X 1000
		35		60 HZ	460 V / 28.5 A					
HPU 6	450 BAR	22	18.5 KW / 25 HP	50 HZ	380-420 V / 34.31 A	240 L	FGV15-20/15F (NO LS & PRESSURE COMP)	3 WAY BALL VALVE FOR A & B SELECTION	NA	1150 X 700 X 1450
		26		60 HZ	420-480V / 34.31 A					
HPU 6A	630 BAR	13.5	15 KW	50 HZ	415 V / 26.35 A	300 L	RK21 PLUNGER PUMP (NO LS & PRESSURE COMP)	3 WAY VALVE FOR A & B SELECTION	NA	1150 X 800 X 1500
		16	18 KW	60 HZ	440V / 26.35 A					
HPU 7	280 BAR	40	22 KW / 30 HP	50 HZ	380V / 42 A 415 V / 40 A	244 L	A10VSO28 DFLR/31R (WITH PRESSURE , FLOW & POWER	MANUAL / PVG32 / SINGLE SECTION	NA	1250 X 650 X 1700
HPU 8	250 BAR	50	22 KW / 30 HP	60 HZ	480 V / 33.3 A	230L	A10VSO45 DFR1/52R (WITH LS & PRESSURE COMP)	MANUAL / PVG32 / SINGLE SECTION	WATER COOLER	1360 X 700 X 1450
	210 BAR	55								
HPU 9	200 BAR	40	22 KW / 30 HP	60 HZ	440 V / 36.6 A	200 L	GEAR PUMP (NO LS & PRESSURE COMP)	NO CONTROL VALVE	NA	600 X 600 X 1300
HPU 10	200 BAR	40	22 KW / 30 HP	60 HZ	440 V / 36.6 A	200 L	GEAR PUMP (NO LS & PRESSURE COMP)	NO CONTROL VALVE	NA	600 X 600 X 1300

HPU 10A	250 BAR	55	22 KW / 30 HP	60 HZ	230 V / 68.8 A	380 L	AA10VSO7 1DFLR/31L - PKC92NO 0 (With PR, FLOW & POWER CONTROL)	NO CONTROL VALVE	AIR COOLER	2000 X 1500 X 2500
	210 BAR	95			460 V / 34.4 A					
HPU 11	250 BAR	50	24 KW Engine / 30 HP	NA	NA	230 L	A7VO28DR / 63R- NPB01(WITH LS & PRESSURE COMP)	MANUAL / PVG32 / TWO SECTION	AIR COOLER	1600 X 800 X 1800
HPU 12	240 BAR	50	30 KW / 40 HP	50 HZ	400 V / 56.52 A	250 L	GEAR PUMP (NO LS & PRESSURE COMP)	NO CONTROL VALVE	NA	910 X 710 X 1530
		60	36 KW / 48 HP	60 HZ	480 V / 56.52 A					
HPU 14	350 BAR	50	30 KW / 40 HP	50 HZ	400 V / 54.9 A	280 L	A11VO40 DRG/10R (WITH LS & PRESSURE COMP)	MANUAL / PVG32 / SINGLE SECTION	NA	1450 X 1030 X 1380
		60	34.5 KW / 46 HP	60 HZ	440 V / 49.2 A					
HPU 16	350 BAR	75	45 KW / 60 HP	50 HZ	415 V / 78 A	600 L	PV80 X 19MNPBS (WITH LS & PRESSURE COMP)	MANUAL / PVG120 / SINGLE SECTION	AIR COOLER	1670 X 1070 X 1580
	280 BAR	100		50 HZ	415 V / 78 A					
		120		60 HZ	440 V / 78 A					
HPU 16A	200 BAR	131	86 KW Engine / 115 HP	NA	NA	430 L	PVG-100-C1UV (NO LS & PRESSURE COMP)	NO CONTROL VALVE	NA	2950 X 1880 X 1000
	320 BAR	90								
HPU 16B	350 BAR	135	75 KW / 100 HP	50 HZ	126 A	1000 L	A11VO95L RDS/10R- NSD12NO 0 (WITH LS & PRESSURE COMP)	MANUAL / PVG120-1 SECTION / PVG32-1 SECTION	AIR COOLER	2150 X 1500 X 2100
		169		60 HZ	119 A					

HPU 16C	250 BAR	191	75 KW / 100 HP	50 HZ	136 A	950 L	PVH131C-RAF-16S-11-C25VT (WITH LS & POWER CONTROL)	NO CONTROL VALVE	WATER COOLER	1600 X 1200 X 2250
		230	86 KW / 115 HP	60 HZ	132 A					
HPU 16D	250 BAR	191	75 KW / 100 HP	50 HZ	136 A	950 L	PVH131C-RAF-16S-11-C25VT (WITH LS & POWER CONTROL)	NO CONTROL VALVE	WATER COOLER	1600 X 1200 X 2250
		230	86 KW / 115 HP	60 HZ	132 A					
HPU 17	250 BAR	154	90 KW / 120 HP	50 HZ	415 V / 153 A	400 L	51575000 3 (NO LS & PRESSURE COMP)	MANUAL / PVG120 / TWO SECTION	NA	1100 X 1000 X 1750
		187		60 HZ	440 V / 140 A					
HPU 18	250 BAR	196	90 KW / 125 HP	50 HZ	415 V / 151.1 A	1500 L	PVH131- (WITH LS & PRESSURE COMP)	MANUAL / PVG120-1 SECTION / PVG32-2 SECTION	AIR COOLER	2000 X 1350 X 2175
		228		60 HZ	440 V / 142.5 A					
HPU 18 (FLUSHING)	80 BAR	480	90 KW / 125 HP	50 HZ	415 V / 151.1 A	1500 L	GEAR PUMP (Double pump) (NO LS & PRESSURE COMP)	MANUAL / PVG120-1 SECTION / PVG32-2 SECTION	AIR COOLER	2000 X 1350 X 2175
		576		60 HZ	440 V / 142.5 A					
HPU 19	350 BAR	185	111 KW / 150 HP	60 HZ	460 V / 175 A	1200 L	A11VLO13 ODR/10R-NSD12NO O-S (WITH LS & PRESSURE COMP)	MANUAL / PVG120 / TWO SECTION	NA	2100 X 1300 X 2000
	300 BAR	230								
HPU 20	400 BAR	350LP M(P1) + 350PL M(P2)	2 X 160 KW / 215 HP	50 HZ	380-415 V / 288 - 264 A	2500 L	2 X HPR210-02R 000 (WITH LS & PRESSURE COMP)	JOY STICK CONTROL	2 X AIR COOLER	2990 X 2430 X 2900
				60 HZ	440 - 480 V / 249 - 228 A					

Hydraulic Standard Jack Cylinder Details:

(Single Acting, Spring Return Cylinders)

JACK CYLINDER IDENTIFICATION	QTY	CYLINDER TYPE	TONAGE (AT MAX PRESSURE) IN	OUTSIDE DIAMETER IN MM	PLUNGER / ROD DIA IN MM	HOLLOW CYL HOLE DIA IN MM	CYLINDER BORE AREA IN CM ²	COLLAPSED HEIGHT IN MM	STROKE LENGTH IN MM	MAX PRESSURE IN BAR	MAKE & MODEL
1A & 1B	2	SOLID	5	38	25.4	NA	6.5	165	76	700	ENERPAC (RC-53)
2	1	SOLID	10	82 X 55	38.1	NA	14.5	43	11	700	ENERPAC (RSM-100)
3	1	SOLID	10	57	38.1	NA	14.5	89	26	700	ENERPAC (RC-101)
4A, 4B & 4C	3	SOLID	10	57	38.1	NA	14.5	298	203	700	HYDROTEC
5A, 5B, 5C & 5D	4	SOLID	10	57	38.1	NA	14.5	349	257	700	SUN&RUN (RSC-1010)
6A & 6B	2	HOLLOW	5	69	35.1	19	6.84	55	8	700	HYDROTEC
8	1	HOLLOW	20	98	54.1	26.9	30.7	162	49	700	ENERPAC (RCH-202)
8A	1	HOLLOW	20	98	54.1	26.9	30.7	306	155	700	ENERPAC (RCH-206)
8B	1	SOLID	20	101*76	49.3	NA	28.7	51	11	700	SUN&RUN (RSSM-200)
9A & 9B	2	SOLID	25	85	57.2	NA	33.2	374	261	700	HYDROTEC
9C & 9D	2	SOLID	25	85	57.2	NA	33.2	323	210	700	HYDROTEC
10	1	SOLID	30	101	66.5	NA	42.1	117	62	700	ENERPAC (RCS-302)
11	1	HOLLOW	30	121	82.6	32.5	40.9	248	152.4	700	POWER TEAM RH306

11A	1	HOLL OW	30	114	63.5	33.3	46.6	178	62	700	ENERP AC (RCH- 306)
12	1	SOLID	30	101	57.2	NA	42.1	387	209	700	HYDRO TEC
12A, B,C & D	4	SOLID	50	127	79.5	NA	71.2	282	159	700	SUN&R UN (RSC- 506)
13	1	HOLL OW	60	159	91.9	53.8	82.3	247	76	700	ENERP AC (RCH- 603)
14A & 14B	2	HOLL OW	60	159	91.9	53.8	82.3	323	153	700	ENERP AC (RCH- 606)
15	1	HOLL OW	95	212	127	79	133	254	76	700	ENERP AC (RCH- 1003)
16	1	SOLID	95	177	104.9	NA	133.3	357	168	700	ENERP AC (RC- 1006)
23A & 23B	2	SOLID	150	215	115	NA	200.96	300	150	700	SUN&R UN (S150- 150)
24A to 24 F	6	SOLID	200	255	135	NA	283.38	300	150	700	SUN&R UN (S200- 150)

Hydraulic Standard Jack Cylinder Details:

(Double Acting, Hydraulic Return Cylinders)

JACK CYLIN DER IDEND IFICAT ION NO	QTY	CYLIN DER TYPE	TONA GE (AT MAX PRESS URE) IN TON	OUTSI DE DIAME TER IN MM	PLUN GER / ROD DIA IN MM	HOLL OW CYL HOLE DIA IN MM	CYLIN DER BORE AREA IN CM ²	COLLA PSED HEIGH T IN MM	STROK E LENGT H IN MM	MAX PRESS URE IN BAR	MAKE & MODE L
25	1	HOLL OW	145	248	152.4	79.5	PUSH - 204.1 PULL - 102.6	350	203	700	SUN&R UN (RSRH - 1508)
26A & 26B	2	SOLID	300	380	200	NA	PUSH - -- PULL - --	705	400	530	GHPL

Hydraulic Jack Cylinder Details:

(Non-Standard & Non Spring Return)

JACK CYLINDER IDEND	QTY	CYLINDER TYPE	TONAGE (AT MAX PRESS	OUTSIDE DIAMETER IN	PLUNGER / ROD DIA IN	HOLLOW CYL HOLE	CYLINDER BORE AREA	COLLAPSED HEIGHT IN	STROKE LENGTH IN	MAX PRESSURE IN	MAKE
17A	1	SOLID	21.8	90	63	NA	31.2	40	10	700	GHPL
18A & 18B	2	SOLID	21.8	90	63	NA	31.2	50	25	700	GHPL
19A, 19B & 19C	3	SOLID	21.8	90	63	NA	31.2	101	70	700	GHPL
20	1	SOLID	21.8	90	63	NA	31.2	148	105	700	GHPL
21A, B, C, D, E	5	SOLID	57.2	148	102	NA	81.7	80	45	700	GHPL
22	1	SOLID	200	355	215	NA	363	350	175	550	GHPL
27A & 27B	2	HOLLOW	18	95	35	25	25.55	150	75	700	GHPL

Hand Pump / High Pressure Pump:

S NO	IDENTIFICATION /DESCRIPTION	RESERVOIR CAPACITY IN LITRES	TYPE	OPERATION	MAX PRESSURE IN BAR	SIZE	WEIGHT WITHOUT OIL	MAKE
1	BLUE COLOR, HANDPUMP, OUTPUT - 1/4" NPT X QDC FITTING & COMES WITH PRESSURE GAUGE	0.8	SINGLE ACTING	MANUAL	500	59 X 12 X 15 CM	7.5KG	NO DETAILS
2	BLUE COLOR, HANDPUMP, OUTPUT - 1/4" NPT X QDC FITTING & COMES WITH PRESSURE GAUGE	0.9	SINGLE ACTING	MANUAL	700	59 X 12 X 15 CM	7.5KG	SPX POWERTEAM MODEL-P55

3A & 3B	WHITE/ORANGE COLOR, HANDPUMP, OUT PUT - 3/8" NPT X QDC FITTING & COMES WITH PRESSURE GAUGE	2.3	SINGLE ACTING	MANUAL	700	58 X 10 X 20 CM	14 KG	SPX POWER TEAM MODEL-P159
4A & 4B	YELLOW / BLACK COLOR, HANDPUMP, OUT PUT - 1/4" NPT X QDC FITTING & COMES WITH PRESSURE GAUGE	0.9	SINGLE ACTING	MANUAL	700	56 X 18 X 23 CM	10 KG	ENERPAC MODEL P392
5	YELLOW / BLACK COLOR, ELECTRICAL OPERATED PUMP, FLOW RATE - 0.82 LPM OUT PUT - 1/4" NPT X QDC FITTING - 2 SETS &	20	DOUBLE ACTING	ELECTRICAL 1.12KW/ 230V/ 1 PHASE / 50HZ	700	50 X 45 X 60 CM	65 KG	ENERPAC MODEL ZE4420 MI
6	YELLOW COLOR, AIR OPERATED PUMP, OUT PUT - 1/4" NPT X QDC FITTING - 2 SETS & COMES WITH PRESSURE GAUGE	6.6	DOUBLE ACTING	AIR OPERATED	700	46 X 38 X 40 CM	35 KG	ENERPAC MODEL-ZA4308 MX
7	YELLOW COLOR, ELECTRICAL OPERATED PUMP, FLOW RATE - 0.7LPM, OUT PUT - 1/4" QDC FITTING - 1 SETS &	8	DOUBLE ACTING	ELECTRICAL 0.75KW, 230V/ 1 PHASE / 50HZ	700	37 X 29 X 53 CM	26 KG	TLP HHB-630B
8A & 8B	YELLOW COLOR, ELECTRICAL OPERATED PUMP, FLOW RATE - 3LPM, OUT PUT - 1/4" QDC FITTING - 1 SETS &	35	DOUBLE ACTING	ELECTRICAL 3KW, 230V/ 1 PHASE / 50HZ	700	50 X 38 X 70 CM	65 KG	TLP HHB-630B-II
9	STAINLESS STEEL FRAM, AIR OPERATED PUMP, OUT PUT - 1/4" NPT X QDC FITTING & COMES WITH PRESSURE GAUGE	10	SINGLE ACTING	AIR OPERATED	2500	45 X 45 X 47 CM	30 KG	SC HYDRAULIC
10	HAND OPERATED WATER PUMP, OUT PUT - 1/4" NPT X 1/4" JIC FITTING & COMES WITH PRESSURE GAUGE	4.5	SINGLE ACTING	MANUAL	50	32 X 30 X 20 CM	3.3 KG	KYOWA MODEL-T50K-P

13	YELLOW COLOR, SS BODY MODIFIED, ELECTRICAL OPERATED PUMP, FLOW RATE - 0.7LPM, OUT PUT - M10 X QDC FITTING - 1 SETS & COMES WITH PRESSURE GAUGE	8	SINGLE ACTING	ELECTRICAL 0.75KW, 230V/ 1 PHASE / 50HZ	700	37 X 31 X 54 CM	26 KG	BORTON TOOLS HHB- 630F
----	--	---	---------------	---	-----	--------------------	-------	---------------------------------

Rental Cranes:

- Refurbished Fixed Box Boom Deck Crane

Model: Refurbished Fixed Box Boom Deck Crane

Maker: Maritime Hydraulics – Norway

Fixed box boom deck crane – 0.9 Ton @ 7.5 M c/w Build in HPU

Lifting Capacity: 0.9 Ton @ 7.5M



- Refurbished HLM 25-4 Crane c/w Winch SWL 1450Kg + Power unit – 2 units

Model: Refurbished HLM 25-4 Crane c/w Winch SWL 1450Kg + Power unit – 2 units

Outreach In Meters/capacity In Kg By Direct Hook: 2.99M / 8000 Kg, 4.93M / 4850 Kg, 6.88M / 3350 Kg, 8.85M / 2450 Kg, 10.7M / 1800 Kg, 12.62M / 1450 Kg



- Refurbished Hiab Crane at 6.5 Meter @ 1300 Kg 200 Bar – 1 Unit

Model: Refurbished Hiap Crane at 6.5 Meter @ 1300 Kg 200 Bar – 1 Unit

At 2.8 Meter: 3000 Kg At 200 Bar

At 3.4 Meter: 2600 Kg At 200 Bar

At 4.4 Meter: 2000 Kg At 200 Bar

At 6.5 Meter: 1300 Kg At 200 Bar

Crane Size In Closing Position: 500 (L) X 2100 (W) X 2400 (H) mm



- Refurbished PM Crane @ 3.5 Meter @ 375 Kg 280 Bar – 1 Unit

Model: Refurbished PM Crane @ 3.5 Meter @ 375 Kg 280 Bar – 1 Unit

At 3.6 Meter: 1000 Kg At 280 Bar

At 4.7 Meter: 525 Kg At 280 Bar

At 5.5 Meter: 375 Kg At 280 Bar



- **Refurbished hiab crane**

Model: Refurbished Hiab Crane

At 3 Meter: 2.2 Ton At 200 Bar

At 3.62 Meter: 2.2 Ton At 200 Bar

At 5 Meter: 1.75 Ton At 200 Bar

At 6.2 Meter: 1.5 Ton At 200 Bar

At 8.5 Meter: 1.5 Ton At 200 Bar



Rental Winches:

- **Steamer Reel WIN**

Model: Steamer Reel Winch

Technical Specifications: Drum Capacity is 8500mxØ64mm Cable@ ≈22 Layer

– Rated Pull 7Tx25m/min (1st layer)

– Brake Holding 10T (static 1st layer)

– L 4509 x W 3780 x H 4821

– Approx Weight – 16 Tons



- **Double Streamer Winch – 2 units**

Model: Double Streamer Winch – 2 units

6T pull/18T brake/ flow 115 lpm / Pr. 215 Bar

6 Rpm low speed / 12 Rpm High speed

Drum Dimension: 2 x Ø3800/ Ø1800 x 2950

Capacity: Approx. 800 meters of Lead-In cable Ø35mm on each drum

Drive: ODIM gearbox with two (2) two-speed Wheel motor on both drums



- **Streamer Storage Winch – 3 units.**

Model: Double Streamer Winch – 2 units

6T pull/18T brake/ flow 115 lpm / Pr. 215 Bar

6 Rpm low speed / 12 Rpm High speed

Drum Dimension: 2 x Ø3800/ Ø1800 x 2950

Capacity: Approx. 800 meters of Lead-In cable Ø35mm on each drum

Drive: ODIM gearbox with two (2) two-speed Wheel motor on both drums.



- **Used Hose Reel**

Model: Used Hose Reel

Capacity: 400 Meter X 4 Inch Dia Hose

Drum: Id Ø1000 X Od Ø2850 X W 1620

Zollern Slewing: 2 T @ 1st Layer **Design Speed:** 15m / Min



- **USED WIDE TOWING WINCH – 40 TONS**

Model: Used Wide Towing Winch – 40 Tons

At 7.6 T: 50 Bar

At 15.00 T: 100 Bar At 25.70 T: 150 Bar

At 34.00t: 200 Bar At 40.70t: 250 Bar

Drum Size: Id 660 X Od 1750 X W 1235 Mm

Appx Overall Size: 2110 (L) X 2875 (W) X 1865 (H) mm



- **Refurbished Hydraulic Winch**

Model: Refurbished Hydraulic Winch

Maximum Load: 7.5 Tons @ First Layer @ 210 Bar Pressure

Drum Capacity: 328 Metres Of Dia . 19mm Wire Rope

Gear Ratio: 1: 63 **Overall Size:** 1500 (L) X 1000 (W) X 800 (H)

Total Weight: Approx. 1000 Kg

Displacement Of Hydraulic Motor: 100 cc /rev



- **Refurbished Cable Drum Winch**

Model: Refurbished Cable Drum Winch

Technical Specification

First Layer Pull: 10 Ton **Top Layer Pull:** 2 Ton

Dia: 19mm Cable Accomodate 5000 Meters.

Winch Consist Of Saucer Danfoss Hydraulic Motor c/w
Gearbox And Disk Brake.

Hydraulic Motor Coupled Into Slew Ring Assembly.



Rental Air Winches:

- **Refurbished Air Winch**

Model: Refurbished Air Winch

Pull Load: 2.5 Tons @ First Layer @ 7~10 Bar Pressure

Lift Load: 1.25tons @ First Layer @ 7~10 Bar Pressure

Drum Capacity: Dia ½ Inch X 140 Meters

Overall Size: 1400 (L) X 700 (W) X 800 (H)

Total Weight: 430 Kg



- **Refurbished Ram Winch K6ul AmbI**

Model: Refurbished Ram Winch K6ul AmbI

Maximum Load: 10000lbs @ First Layer @ 7~10 Air Pressure

Drum Capacity: 815 Feet Of ¾" Dia. Wire Rope

Overall Size: 1700 (L) X 1000 (W) X 1000 (H)mm

Total Weight: 945kg



- **Refurbished Air Winch**

Model: Refurbished Air Winch

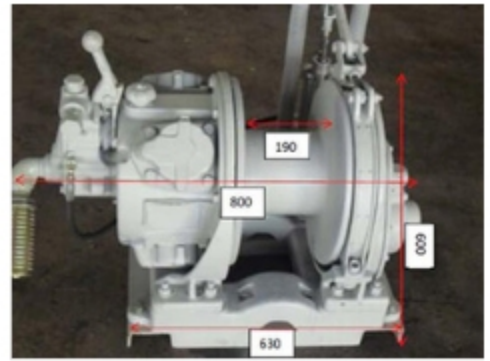
Pull Load: 1.5 Ton For Pulling @ 1st Layer @ 7~10 Bar Pressure

Lift Load: 0.5 Ton For Lifting @ 1st Layer @ 7~10 Bar Pressure

Drum Capacity: Dia 12mm X 220 Meters

Overall Size: 800 (L) X 410 (W) X 600 (H) mm

Appx. Weight: 500 kg



- **Electrical Winch With 300kg swl**

Model: Electrical Winch With 300kg swl

Lifting Speed, First Layer: 10 M/min – Top Layer : 15 M/min

Motor Rating Type: Induction

Motor Rating Ip44: 3ph, 380v – 440v, 0.75 X 4

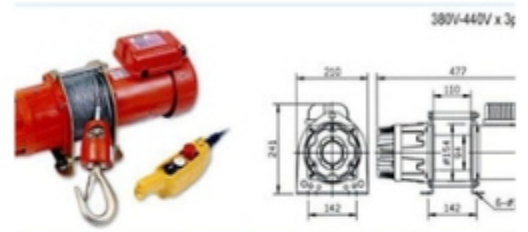
Gear Ratio: 43:1 – Maximum Lifting Height: 29m

Braking Methods: Electromagnetic – Gross Weight : 34 kg

Wire Rope Size: *6mm (6 X 19) X 30m,

Breaking Strength: 2010 kg

Body Dimension: 477mm (L) X 210mm (D) X 241mm (H)



- **Electrical Winch 650kg SWL**

Model: Electrical Winch 650kg SWL

Winch Pulling Capacity: 650 Kg SWL – Brake Holding – 930 Kg

Electrical Motor 7.5 Kw, 4 Pol, 1450 Rpm At 50 HZ

Electrical Motor Drawn Amps @ 650 Kg: Hoisting-14~17 Amps,
Lowering 7~9 Amps

Dimensions Of The Drum: O.D 1020mm X I.d 410mm X L 500mm.

Dimensions Of The Winch: L 1530mm X H 1450mm X W 1150mm

Gear Ratio: 1: 60



- **1 Ton Electrical Winch**

Model: 1 Ton Electrical Winch

Technical Specifications

Voltage: 415v, 3phase, 50hz **Capacity:** 1100kg

Wire Rope: 12mm Ø X 100 Metres

Lifting Height: 97 Metres

Motor: 7.5 Hp X 4 Pole 20160129_153711



- **Electrical Winch – 2.2 Tons**

Model: 1 Ton Electrical Winch

Technical Specifications

Voltage: 415v, 3phase, 50hz **Capacity:** 1100kg

Wire Rope: 12mm Ø X 100 Metres

Lifting Height: 97 Metres

Motor: 7.5 Hp X 4 Pole. 20160129_153711



- **Electric Winch 2.5 Ton SWL**

Model: Electric Winch 2.5 Ton SWL

Safe Working Load: 2.5 Ton Max, @12.5 Amps Motor Current

Tested Load: 3.2 Ton

Electric Motor: 7.5 HP/5.5 Kw 415v/50hz D.O.L, FWD/rev Pendant

Drum Dimensions: Od 400 X Id 250 X W 447

Cable Storage Capacity: 1/2" -217M, 9/16" – 150M, 5/8": 146M, 3/4": 96M

Overall Size: 1231 (L) x 480 (W) x 420 (H)



- **Used 5 Ton Electric Winch – 1 Unit**

Model: Used 5 Ton Electric Winch – 1 Unit

Lifting Capacity: 5,000 Kg At Wire Rope Top Layer

Power Source: 11kw, 3 PH, 380 – 440v, 50/60 Hz

Gear Ration: 197:1 **Maximum Lifting Height:** 192m

Braking Methods: Electromagnetic **Wire Rope:** 22.4mm X 200m

Drum Length: L 680mm X Id 324mm X Od 570mm

Body Dimensions: (L X D X H): 1,860 X 740 X 905mm

Gross Weight: 1,545 Kg



We have stocks for the following items:

- Stainless Steel Seamless Tubes ; Both in Inches and MM for 316 / 316L / 317
- Hydraulics fittings & Accessories and Hoses.
- Rexroth Hydraulic Pumps / Motors / Control Valves
- Vickers Hydraulic Pumps / Motors / Control Valves
- Eaton Hydraulic Pumps / Motors / Control Valves
- Danfoss Hydraulic Pumps / Motors / Control Valves
- Hagglund Motors
- ZOLLERN Rope Winch.
 - It is brand new & Ex-stock.
 - ZHP 4.22 – Drawing No 1055660—2 Units
 - ZHP 4.25 – Drawing No 1055757—1 Units
 - ZHP 4.26 – Drawing No 1055755—4 Units
- Power Units / Winches / Cranes
- Zollern Slewing Drive C/W Pinion Gear
 - ZHP 3.15 Slewing drive c/w Rexroth motor A2PM 16/61 WVAB030—2 units
 - ZHP 3.19 Slewing drive W/O motor—1 unit
- ZHP 3.20 Slewing drive W/O motor—2 units
- ZHP 3.22 Slewing drive c/w Rexroth motor A2FM 28/61 WVAB010—2 units
- ZHP 3.22 Slewing drive W/O motor—6 units
- ZHP 3.24 slewing drive c/w Rexroth A2FM45/61 WVAB010—2 units
- ZHP 3.24 slewing drive W/O motor—12 units
- ZHP 3.25 slewing drive c/w Parker motor P/N 379994 Type 12-060-MF-1V-D-000-000-0—2 units
- Screw Pumps / Gear Pumps / Gear Motors

Quality/Awards:

Concern for Quality, Health and Safety is amongst our highest priorities. GHPL is compliant with all applicable laws and regulations and we work towards an aim of zero incidents.

GHPL is also certified in **ISO 9001: 2015**, **ISO 45001: 2018** and **BizSafe Star**, in our pursuit for excellence in offering quality products and services.



Quality Management Certification



Occupational Health And Safety



BizSafe Certificate



Circle Of Excellence



Circle Of Excellence



Singapore Quality Brands 2013/2014



SME Achiever Award 2014/2015



SME Achiever Award 2014/2015



BizSafe Certificate



Circle Of Excellence

CONTACT GLOBAL HYDRAULICS PTE. LTD.

Address: 115 Neythal Road, Singapore 628602

Call Us: +65 6265 0126

Fax: +65 6265 6052

Email: globalhydraulics@globalhydraulics.com.sg

Repair / Service / Trading / Sales Enquiries

Mr. NS KUMAR

Email: ns.kumar@globalhydraulics.com.sg

salescoor@globalhydraulics.com.sg

Call Us: +65 9663 8391

Mr. TH SIM

Email: thsim@globalhydraulics.com.sg

sales@globalhydraulics.com.sg

Call Us: +65 9663 7118

HR Enquiries

Email: hr@globalhydraulics.com.sg

Accounts Enquiries

Email: accounts@globalhydraulics.com.sg